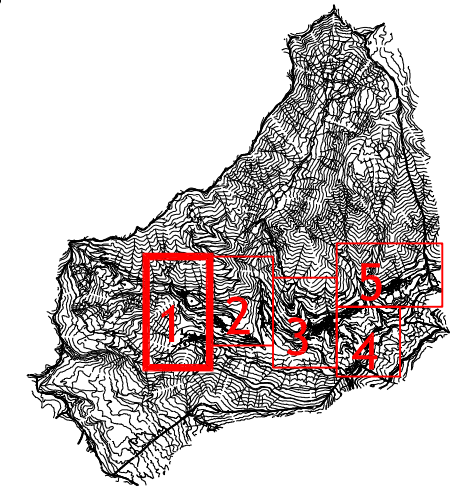


Piano di Governo del Territorio
Piano delle Regole

Classificazione del territorio comunale
ambito urbano

con le modificazioni conseguenti alle controdeduzioni



PGT

delibera di adozione C.C. n° 18 del 28 luglio 2010
delibera di approvazione C.C. n° 34 del 18 dicembre 2010
pubblicazione sul BURL SI n° 14 del 6 aprile 2011

VARIANTE n° 1

delibera di adozione C.C. n° 25 del 10 ottobre 2013
delibera di approvazione C.C. n° 8 del 17 aprile 2014
pubblicazione sul BURL SI n° 14 del 6 aprile 2011

il Sindaco
Dr Guido GIUDICI

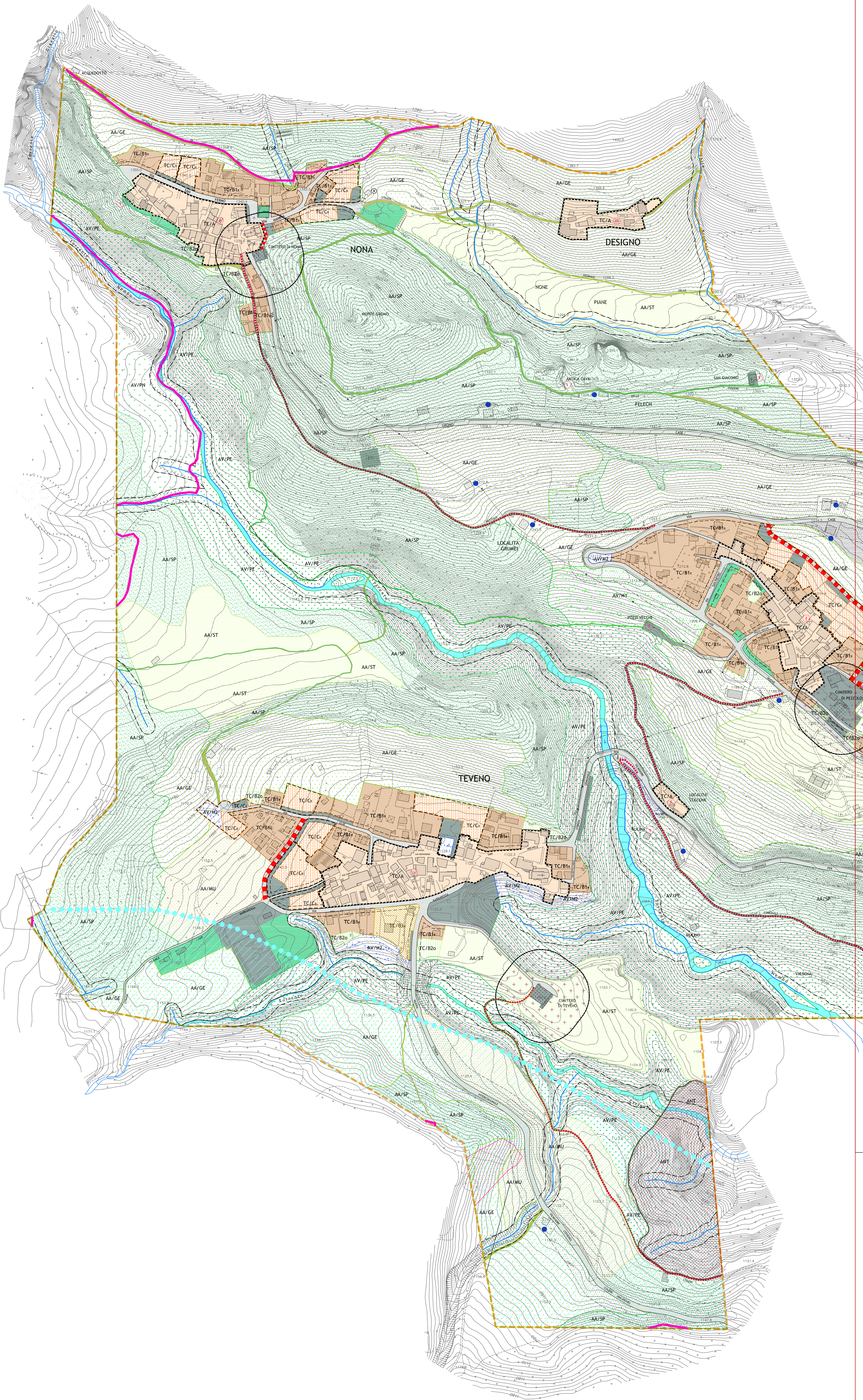
il Responsabile dell'U.T.
geom. Grazioso Pedersoli

Data:
agosto 2013

redazione
STUDIO ASSOCIATO FUGAZZA
Milano - Via Catalani 44
di arch. Ing. Sergio Fugazza
di arch. Ing. Massimo Pignatelli
di arch. Ing. Maurizio Corbelli

Scala:
1:2000

Tavola:
2.1 pr



LEGENDA

TITOLO V - DISCIPLINA DEL TESSUTO CONSOLIDATO

- art. 27 art. 30 art. 31 art. 32 art. 33 art. 34 art. 35 art. 36 art. 37 art. 38 art. 39 art. 40 art. 41 art. 42 art. 43 art. 44 art. 45 art. 46 art. 47 art. 48 art. 49 art. 50 art. 51 art. 52 art. 53 art. 54 art. 55 art. 56 art. 57 art. 58 art. 59 art. 60 art. 61 art. 62 art. 63 art. 64 art. 65 art. 66 art. 67 art. 68 art. 69 art. 70 art. 71 art. 72 art. 73 art. 74 art. 75 art. 76 art. 77 art. 78 art. 79 art. 80 art. 81 art. 82 art. 83 art. 84 art. 85 art. 86 art. 87 art. 88 art. 89 art. 90 art. 91 art. 92 art. 93 art. 94 art. 95 art. 96 art. 97 art. 98 art. 99 art. 100

TITOLO VI - DISCIPLINA DEL TERRITORIO AGRICOLO

- art. 101 art. 102 art. 103 art. 104 art. 105 art. 106 art. 107 art. 108 art. 109 art. 110 art. 111 art. 112 art. 113 art. 114 art. 115 art. 116 art. 117 art. 118 art. 119 art. 120 art. 121 art. 122 art. 123 art. 124 art. 125 art. 126 art. 127 art. 128 art. 129 art. 130 art. 131 art. 132 art. 133 art. 134 art. 135 art. 136 art. 137 art. 138 art. 139 art. 140 art. 141 art. 142 art. 143 art. 144 art. 145 art. 146 art. 147 art. 148 art. 149 art. 150 art. 151 art. 152 art. 153 art. 154 art. 155 art. 156 art. 157 art. 158 art. 159 art. 160 art. 161 art. 162 art. 163 art. 164 art. 165 art. 166 art. 167 art. 168 art. 169 art. 170 art. 171 art. 172 art. 173 art. 174 art. 175 art. 176 art. 177 art. 178 art. 179 art. 180 art. 181 art. 182 art. 183 art. 184 art. 185 art. 186 art. 187 art. 188 art. 189 art. 190 art. 191 art. 192 art. 193 art. 194 art. 195 art. 196 art. 197 art. 198 art. 199 art. 200

TITOLO VII - AREE DI VALORE PAESAGGISTICO-AMBIENTALE ED ECOLOGICHE

- art. 201 art. 202 art. 203 art. 204 art. 205 art. 206 art. 207 art. 208 art. 209 art. 210 art. 211 art. 212 art. 213 art. 214 art. 215 art. 216 art. 217 art. 218 art. 219 art. 220 art. 221 art. 222 art. 223 art. 224 art. 225 art. 226 art. 227 art. 228 art. 229 art. 230 art. 231 art. 232 art. 233 art. 234 art. 235 art. 236 art. 237 art. 238 art. 239 art. 240 art. 241 art. 242 art. 243 art. 244 art. 245 art. 246 art. 247 art. 248 art. 249 art. 250 art. 251 art. 252 art. 253 art. 254 art. 255 art. 256 art. 257 art. 258 art. 259 art. 260 art. 261 art. 262 art. 263 art. 264 art. 265 art. 266 art. 267 art. 268 art. 269 art. 270 art. 271 art. 272 art. 273 art. 274 art. 275 art. 276 art. 277 art. 278 art. 279 art. 280 art. 281 art. 282 art. 283 art. 284 art. 285 art. 286 art. 287 art. 288 art. 289 art. 290 art. 291 art. 292 art. 293 art. 294 art. 295 art. 296 art. 297 art. 298 art. 299 art. 300

TITOLO VIII - AREE NON SOGGETTE A TRASFORMAZIONE

- art. 301 art. 302 art. 303 art. 304 art. 305 art. 306 art. 307 art. 308 art. 309 art. 310 art. 311 art. 312 art. 313 art. 314 art. 315 art. 316 art. 317 art. 318 art. 319 art. 320 art. 321 art. 322 art. 323 art. 324 art. 325 art. 326 art. 327 art. 328 art. 329 art. 330 art. 331 art. 332 art. 333 art. 334 art. 335 art. 336 art. 337 art. 338 art. 339 art. 340 art. 341 art. 342 art. 343 art. 344 art. 345 art. 346 art. 347 art. 348 art. 349 art. 350 art. 351 art. 352 art. 353 art. 354 art. 355 art. 356 art. 357 art. 358 art. 359 art. 360 art. 361 art. 362 art. 363 art. 364 art. 365 art. 366 art. 367 art. 368 art. 369 art. 370 art. 371 art. 372 art. 373 art. 374 art. 375 art. 376 art. 377 art. 378 art. 379 art. 380 art. 381 art. 382 art. 383 art. 384 art. 385 art. 386 art. 387 art. 388 art. 389 art. 390 art. 391 art. 392 art. 393 art. 394 art. 395 art. 396 art. 397 art. 398 art. 399 art. 400

TITOLO IX - DISCIPLINA PAESAGGISTICA

- art. 401 art. 402 art. 403 art. 404 art. 405 art. 406 art. 407 art. 408 art. 409 art. 410 art. 411 art. 412 art. 413 art. 414 art. 415 art. 416 art. 417 art. 418 art. 419 art. 420 art. 421 art. 422 art. 423 art. 424 art. 425 art. 426 art. 427 art. 428 art. 429 art. 430 art. 431 art. 432 art. 433 art. 434 art. 435 art. 436 art. 437 art. 438 art. 439 art. 440 art. 441 art. 442 art. 443 art. 444 art. 445 art. 446 art. 447 art. 448 art. 449 art. 450 art. 451 art. 452 art. 453 art. 454 art. 455 art. 456 art. 457 art. 458 art. 459 art. 460 art. 461 art. 462 art. 463 art. 464 art. 465 art. 466 art. 467 art. 468 art. 469 art. 470 art. 471 art. 472 art. 473 art. 474 art. 475 art. 476 art. 477 art. 478 art. 479 art. 480 art. 481 art. 482 art. 483 art. 484 art. 485 art. 486 art. 487 art. 488 art. 489 art. 490 art. 491 art. 492 art. 493 art. 494 art. 495 art. 496 art. 497 art. 498 art. 499 art. 500

TITOLO X - COMPONENTE GEOLOGICA-IDROGEOLOGICA - SISMICA

- art. 501 art. 502 art. 503 art. 504 art. 505 art. 506 art. 507 art. 508 art. 509 art. 510 art. 511 art. 512 art. 513 art. 514 art. 515 art. 516 art. 517 art. 518 art. 519 art. 520 art. 521 art. 522 art. 523 art. 524 art. 525 art. 526 art. 527 art. 528 art. 529 art. 530 art. 531 art. 532 art. 533 art. 534 art. 535 art. 536 art. 537 art. 538 art. 539 art. 540 art. 541 art. 542 art. 543 art. 544 art. 545 art. 546 art. 547 art. 548 art. 549 art. 550 art. 551 art. 552 art. 553 art. 554 art. 555 art. 556 art. 557 art. 558 art. 559 art. 560 art. 561 art. 562 art. 563 art. 564 art. 565 art. 566 art. 567 art. 568 art. 569 art. 570 art. 571 art. 572 art. 573 art. 574 art. 575 art. 576 art. 577 art. 578 art. 579 art. 580 art. 581 art. 582 art. 583 art. 584 art. 585 art. 586 art. 587 art. 588 art. 589 art. 590 art. 591 art. 592 art. 593 art. 594 art. 595 art. 596 art. 597 art. 598 art. 599 art. 600

PIANO DEI SERVIZI

CAPO III - NORME SPECIFICHE

- art. 601 art. 602 art. 603 art. 604 art. 605 art. 606 art. 607 art. 608 art. 609 art. 610 art. 611 art. 612 art. 613 art. 614 art. 615 art. 616 art. 617 art. 618 art. 619 art. 620 art. 621 art. 622 art. 623 art. 624 art. 625 art. 626 art. 627 art. 628 art. 629 art. 630 art. 631 art. 632 art. 633 art. 634 art. 635 art. 636 art. 637 art. 638 art. 639 art. 640 art. 641 art. 642 art. 643 art. 644 art. 645 art. 646 art. 647 art. 648 art. 649 art. 650 art. 651 art. 652 art. 653 art. 654 art. 655 art. 656 art. 657 art. 658 art. 659 art. 660 art. 661 art. 662 art. 663 art. 664 art. 665 art. 666 art. 667 art. 668 art. 669 art. 670 art. 671 art. 672 art. 673 art. 674 art. 675 art. 676 art. 677 art. 678 art. 679 art. 680 art. 681 art. 682 art. 683 art. 684 art. 685 art. 686 art. 687 art. 688 art. 689 art. 690 art. 691 art. 692 art. 693 art. 694 art. 695 art. 696 art. 697 art. 698 art. 699 art. 700