

Piano di Governo del Territorio

Documento di Piano
Dimensionamento del Piano:
superfici e dimensionamento ambiti

DP 8.1

novembre 2008
scala 1:2000

aggiornamenti

ADOTTATO dal Consiglio Comunale con Delibera n° 50
del 9 dicembre 2008

APPROVATO dal Consiglio Comunale con Delibera n° 26
del 20 luglio 2009

Pianificazione e Coordinamento
arch. Claudio Nodari • arch. mauro bellacini • arch. carlo fasser • arch. anela rivetta

Valutazione Ambientale Strategica
ing. marcella salveti



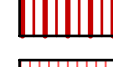
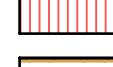


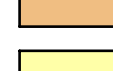




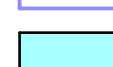


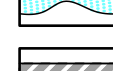

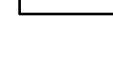
**Il responsabile
del procedimento**
geom. giulio turroni

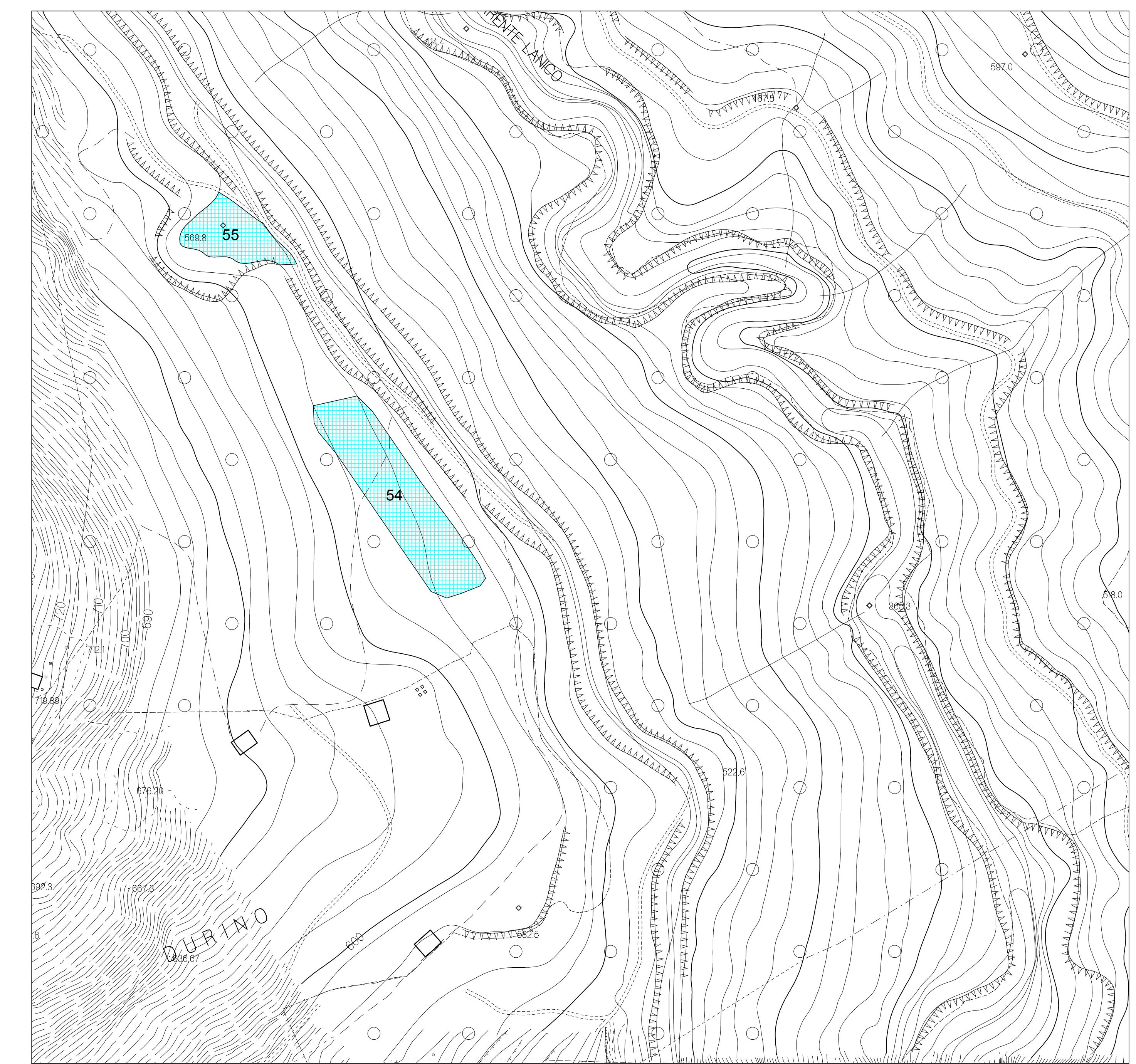
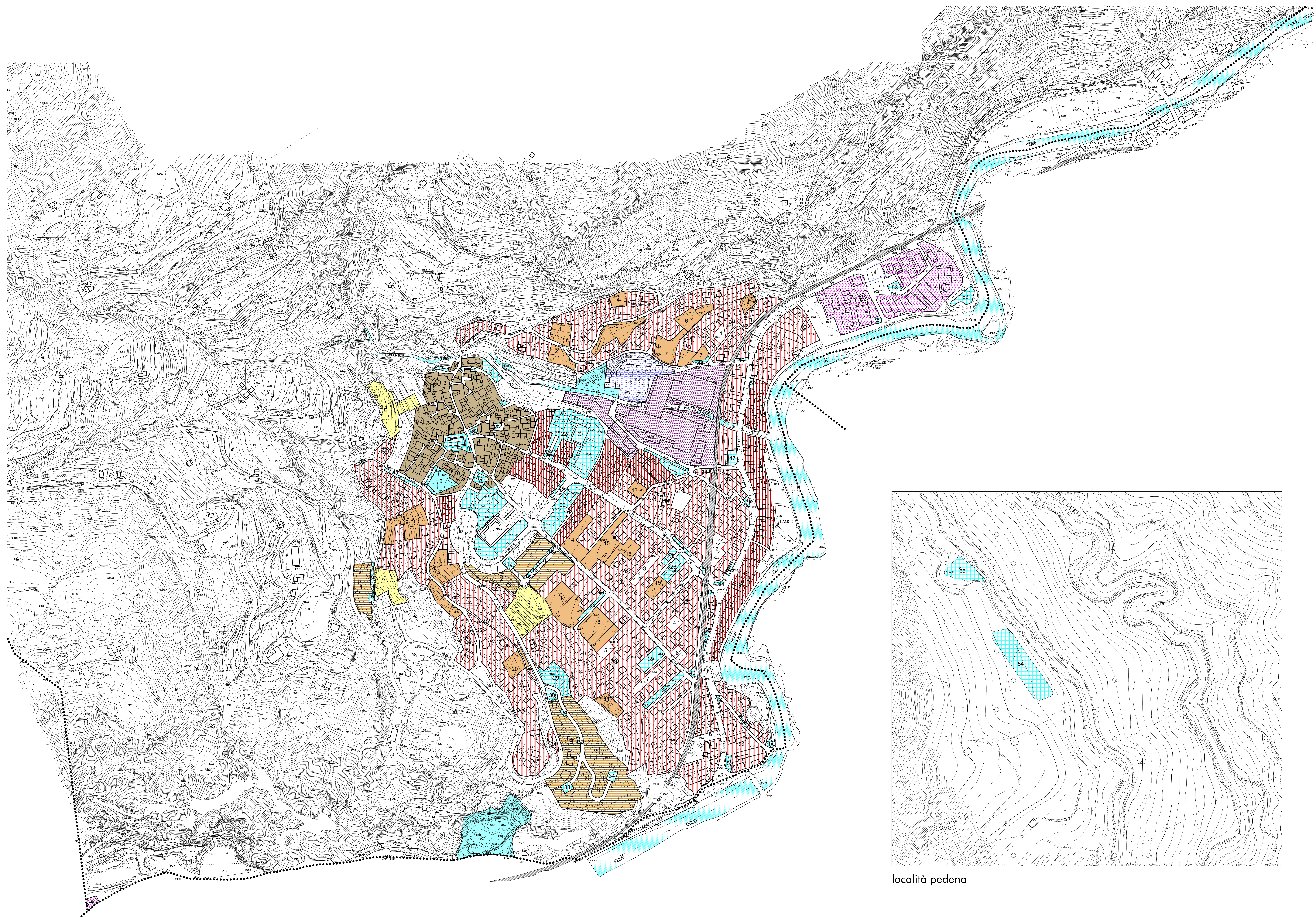
Il sindaco
alexandro dominghini

claudio nodari architetto

studio di architettura e urbanistica
22040 valle (bs) - via s. mariano 57 - tel. e fax 0364.46374

LEGENDA

-  perimetrazione ambiti e numerazione progressiva
-  nuclei di antica formazione (C.S.)
-  ambiti consolidati residenziali (B1)
-  ambiti consolidati residenziali (B2)
-  ambiti consolidati residenziali (VD)
-  lotti liberi (B2)
-  ambiti di trasformazione residenziale soggetti a convenzionamento
-  ambiti di trasformazione residenziale soggetti a P.A.
-  ambiti consolidati produttivi (D1)
-  ambiti consolidati produttivi (D2)
-  ambiti consolidati produttivi (D4)
-  lotti liberi (D2)
-  ambiti di trasformazione a servizio
-  ambiti a servizio
-  corsi d'acqua
-  rete ferroviaria
-  confine comunale



località pedena