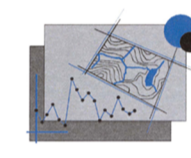


Comune di Corteno Golgi (BS)
Piano di Gestione
SIC IT2070017
Valli di S. Antonio





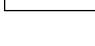
TAVOLA 02
Idrografia

Centro Studi
 Biologia e Ambiente
 di A. Ancari e A. Martini snc
 C.so XXV Aprile 87 - 22036 Erba (CO)
 Tel: 031 910 500
 e-mail: csba.erba@virgilio.it



Gruppo di lavoro:
 Centro Studi Biologia e Ambiente
 Studio Tecnico Forestale Gregorini
 Istituto Oikos

SCALA 1 : 20.000

Legenda	
	SIC IT2070017
	Aree fluviali laghi paludi SICIT2070017
	Corse d'acqua SICIT2070017
	Aste idriche secondarie SICIT2070017
	Cascate

