

ALLEGATI

**CERTIFICATO DI
TARATURA E CONFORMITA' DEL FONOMETRO**

SIT

SERVIZIO DI TARATURA IN ITALIA

Italian Calibration Service



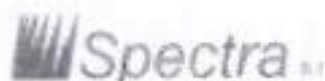
CENTRO DI TARATURA I63

Calibration Centre

Spectra Srl

Laboratorio di Acustica

039 613321



Via Belvedere, 42

Arcore (MB)

Area Laboratori

039 6133235

spectra@spectra.it

www.spectra.it

ESTRATTO DEL CERTIFICATO DI TARATURA N. 6455

Extract of Calibration Certificate No. 6455

Data di Emissione **2011/02/02**

Date of Issue

Destinatario **Eurogeo Snc**

Addessee **Via Pasglia, 21**

Bergamo (BG)

Condizioni ambientali durante la misura

Environmental parameters during measurements

Pressione	1000,0 hPa ± 0,5 hPa	(rif. 920,5 hPa ± 120,5 hPa)
Temperatura	23,4 °C ± 1,0 °C	(rif. 23,0 °C ± 3,0 °C)
Umidità Relativa	32,9 UR% ± 3 UR%	(rif. 47,5 UR% ± 22,5 UR%)

Strumenti sottoposti a verifica

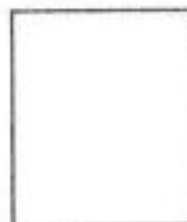
Instrumentation under test

Strumento	Costruttore	Modello	N°Serie/Matricola
Fonometro	LARSON DAVIS	L&D 831	1795
Microfono	PCB Piezotronics	PCB 377B02	108900
Preamplificatore	LARSON DAVIS	L&D PRM831	012589

Il Responsabile del Centro

Head of the Centre

Emilio Caglio



SIT

SERVIZIO DI TARATURA IN ITALIA
Italian Calibration Service



CENTRO DI TARATURA 163

Calibration Centre

Spectra Srl

Laboratorio di Acustica

039 6133321



Via Belvedere, 42

Arcore (MB)

Area Laboratori

039 61333235

spectra@spectra.it

www.spectra.it

ESTRATTO DEL CERTIFICATO DI TARATURA N. 6671

Extract of Calibration Certificate No. 6671

Data di Emissione 2011/04/06

Date of Issue

Destinatario

Addresssee

Eurogeo Snc

Via Paglia, 21

Bergamo (BG)

Condizioni ambientali durante la misura

Environmental parameters during measurements

Pressione 1005,5 hPa \pm 0,5 hPa (rif. 1013,3 hPa \pm 120,5 hPa)

Temperatura 25,4 °C \pm 1,0 °C (rif. 23,0 °C \pm 3,0 °C)

Umidità Relativa 26,8 UR% \pm 3 UR% (rif. 47,5 UR% \pm 22,5 UR%)

Strumenti sottoposti a verifica

Instrumentation under test

Strumento Calibratore	Costruttore	Modello	N° Serie/Matricola
	DELTA OHM	HD 9101	99007135

Il Responsabile del Centro

Head of the Centre

Emilio Caglio



SIT

SERVIZIO DI TARATURA IN ITALIA
Italian Calibration Service



CENTRO DI TARATURA 163

Calibration Centre

Spectra Srl

Laboratorio di Acustica

039 6133321



Via Belvedere, 42

Arcore (MB)

Area Laboratori

039 61333235

spectra@spectra.it

www.spectra.it

ESTRATTO DEL CERTIFICATO DI TARATURA N. 6672

Extract of Calibration Certificate No. 6672

Data di Emissione 2011/04/06

Date of Issue

Destinatario

Addresssee

Eurogeo Snc

Via Paglia, 21

Bergamo (BG)

Condizioni ambientali durante la misura

Environmental parameters during measurements

Pressione 1005,5 hPa \pm 0,5 hPa (rif. 1013,3 hPa \pm 120,5 hPa)

Temperatura 25,3 °C \pm 1,0 °C (rif. 23,0 °C \pm 3,0 °C)

Umidità Relativa 26,3 UR% \pm 3 UR% (rif. 47,5 UR% \pm 22,5 UR%)

Strumenti sottoposti a verifica

Instrumentation under test

Strumento	Costruttore	Modello	N° Serie/Matricola
Fonometro	01 dB	01dB SOLO	60229
Microfono	01 dB	MCE 212	75362
Preamplificatore	01 dB	01dB 21S	12950

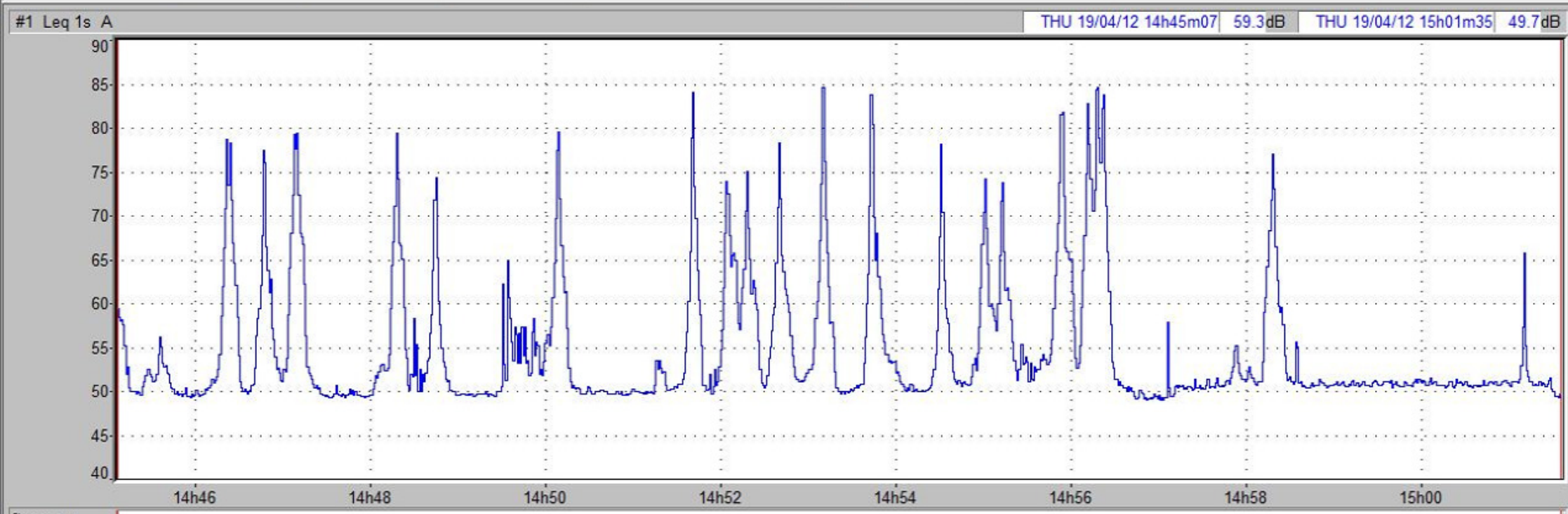
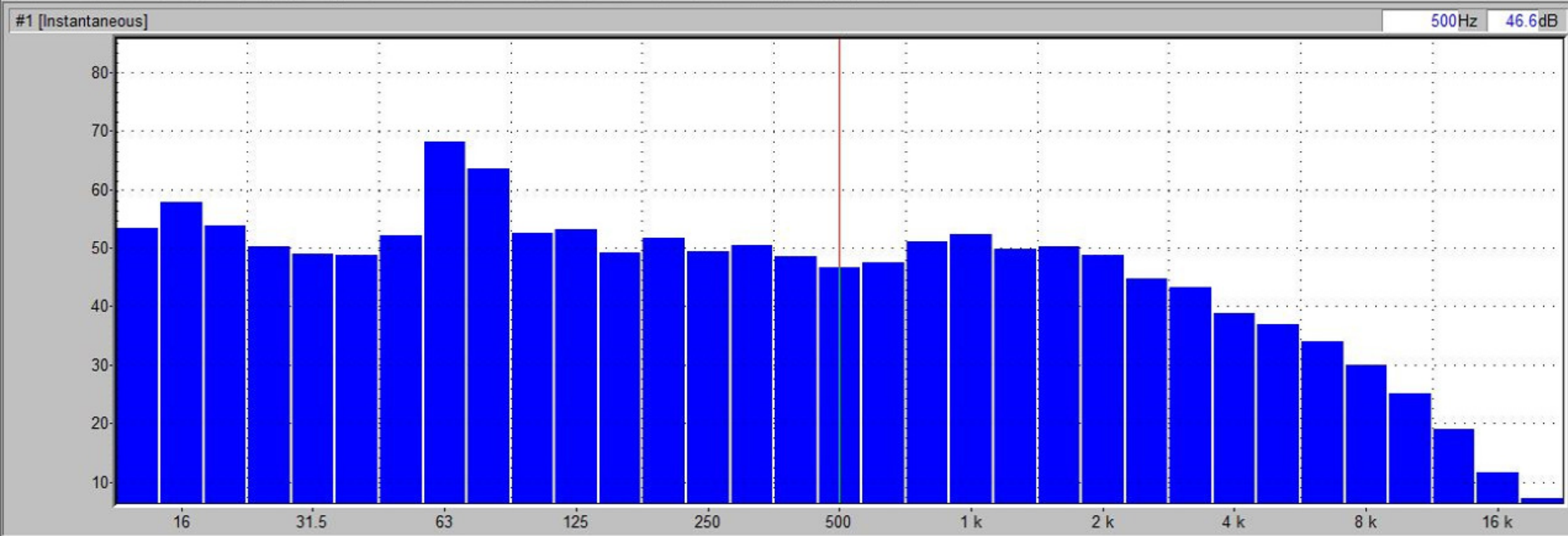
Il Responsabile del Centro

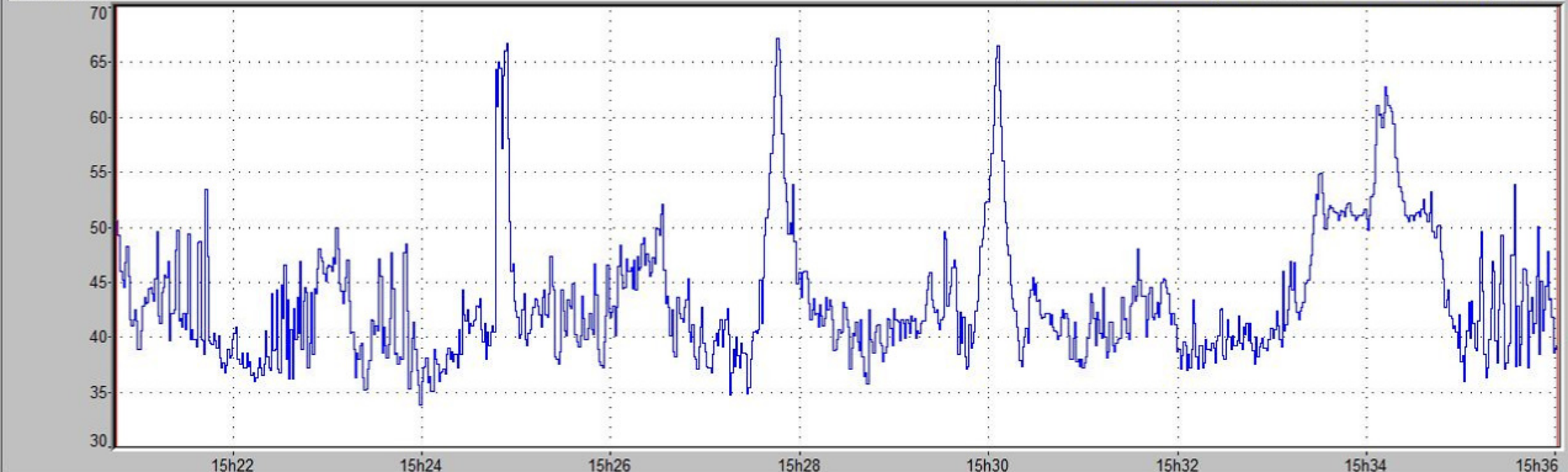
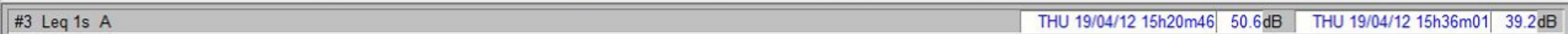
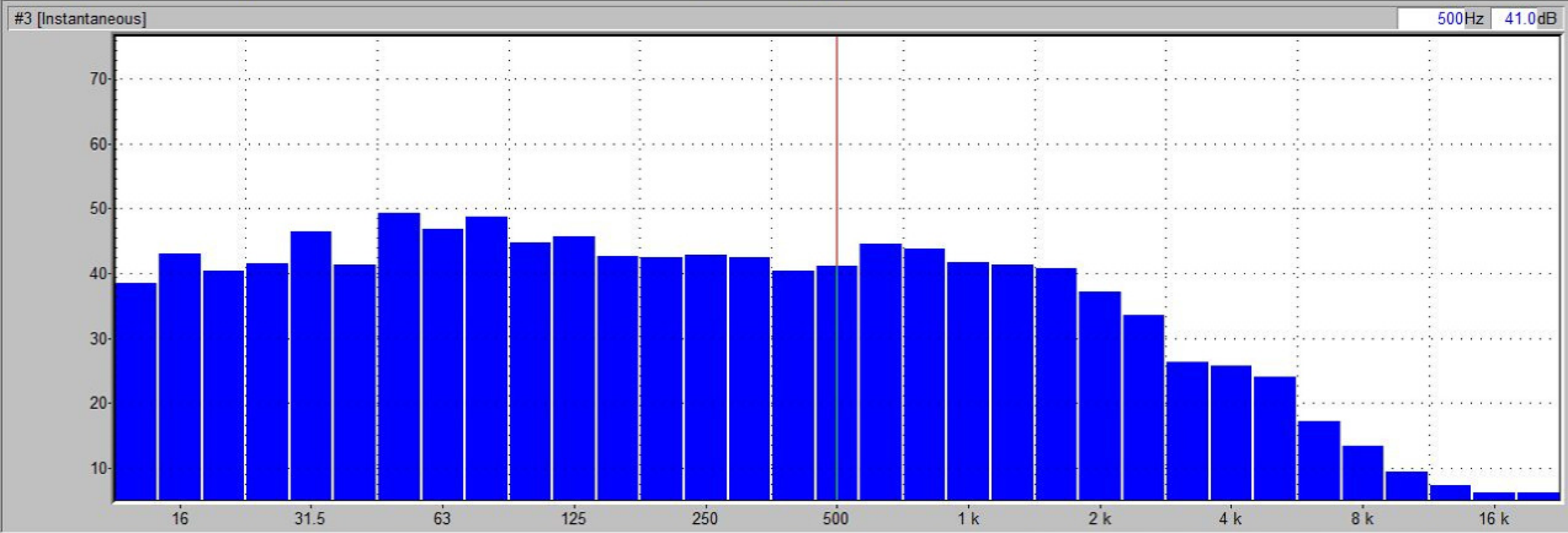
Head of the Centre

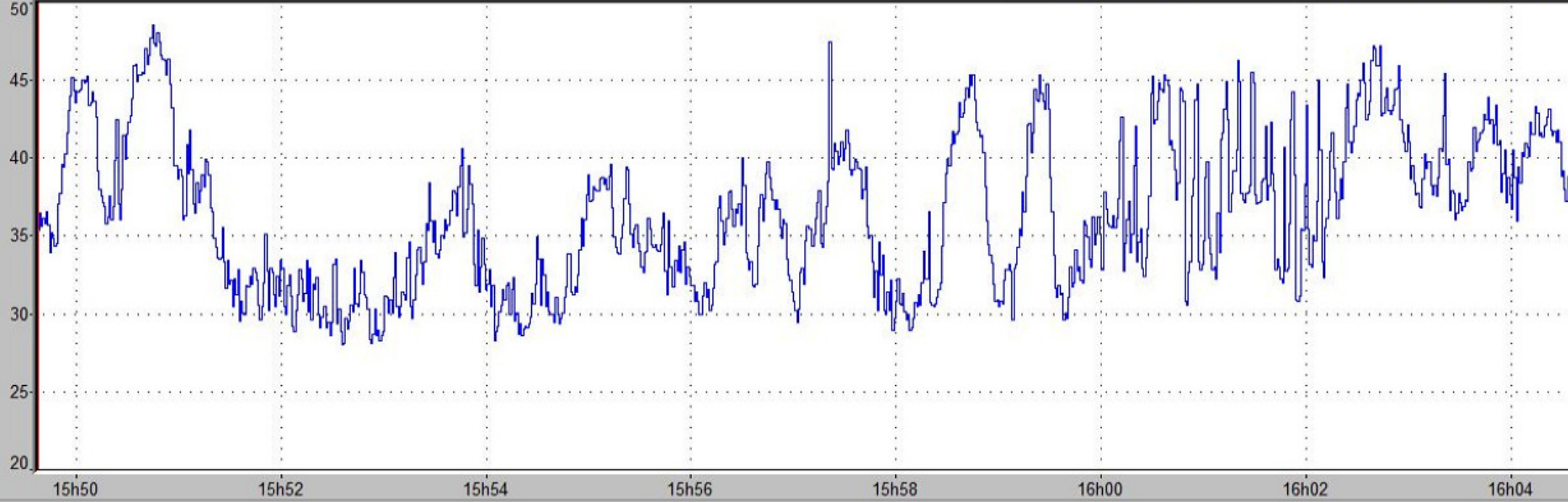
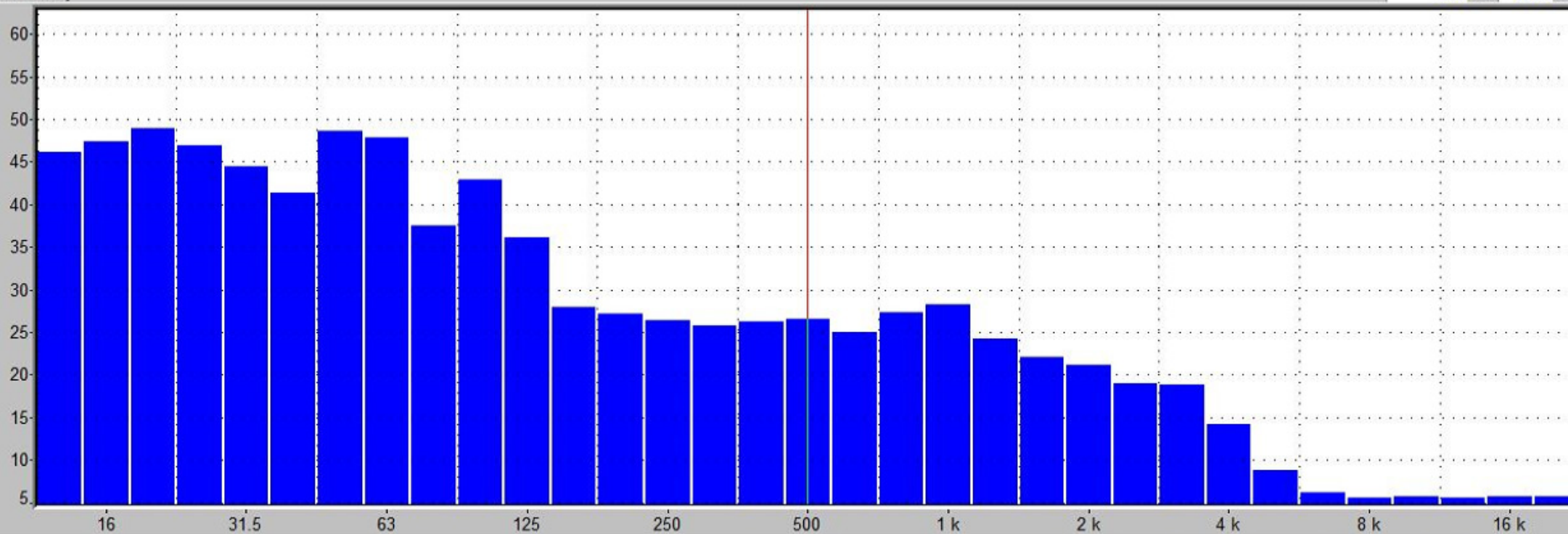
Emilio Caglio

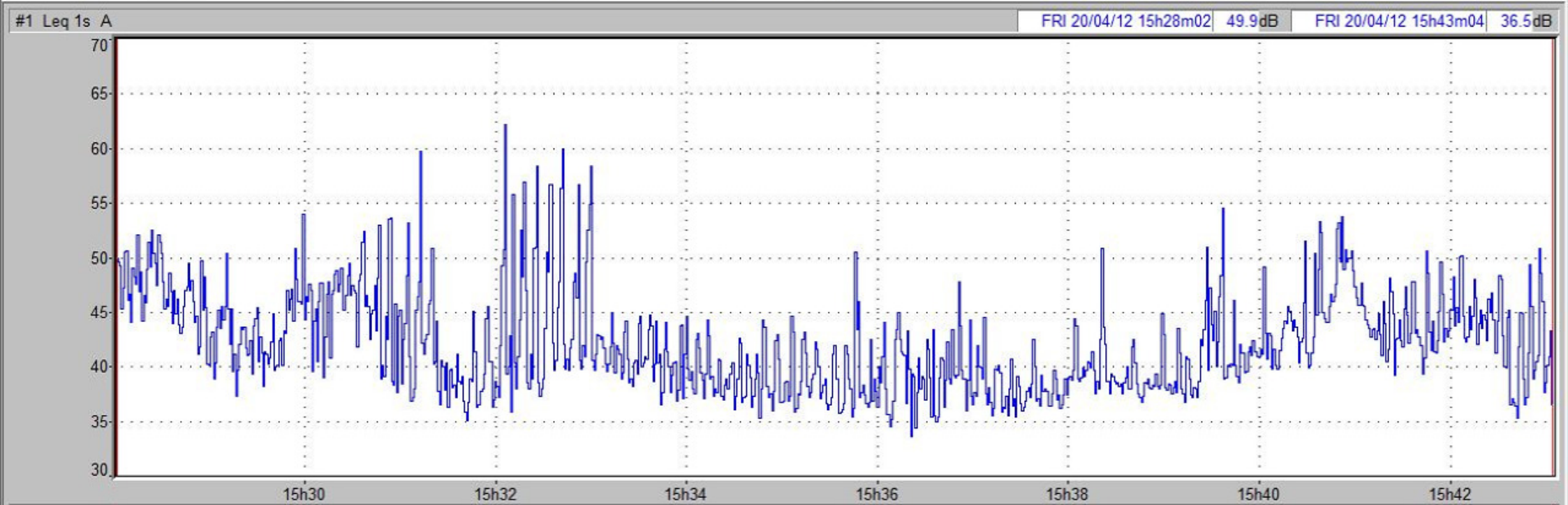
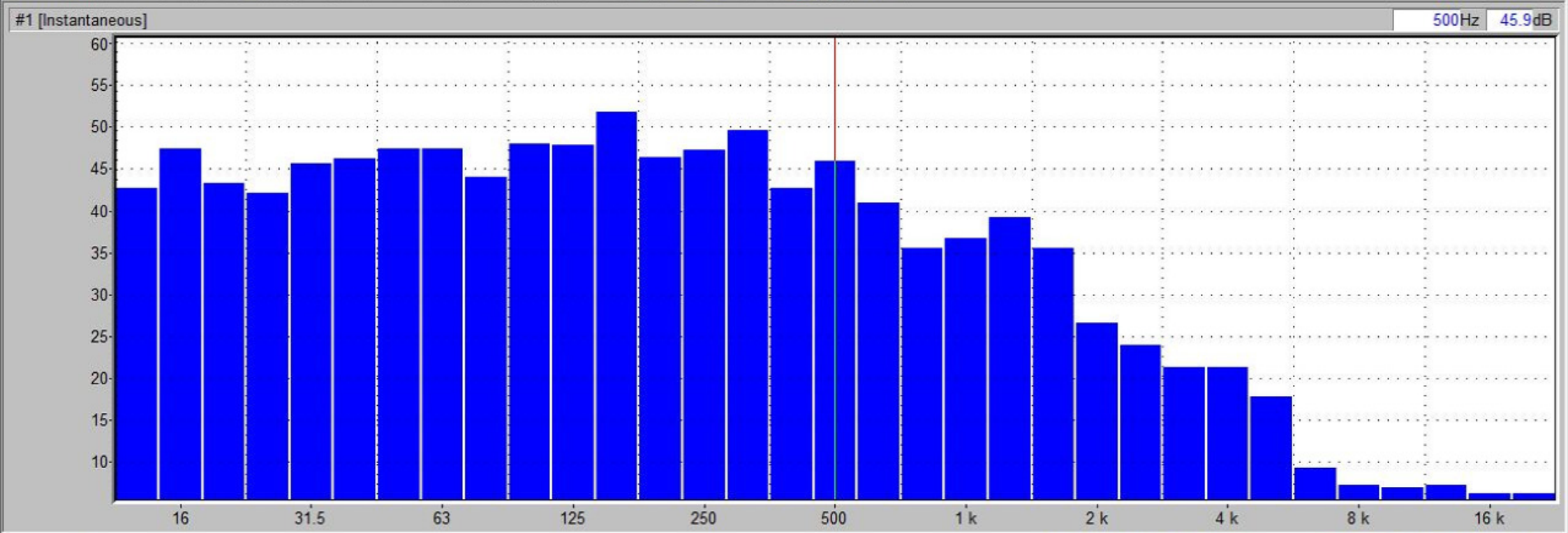


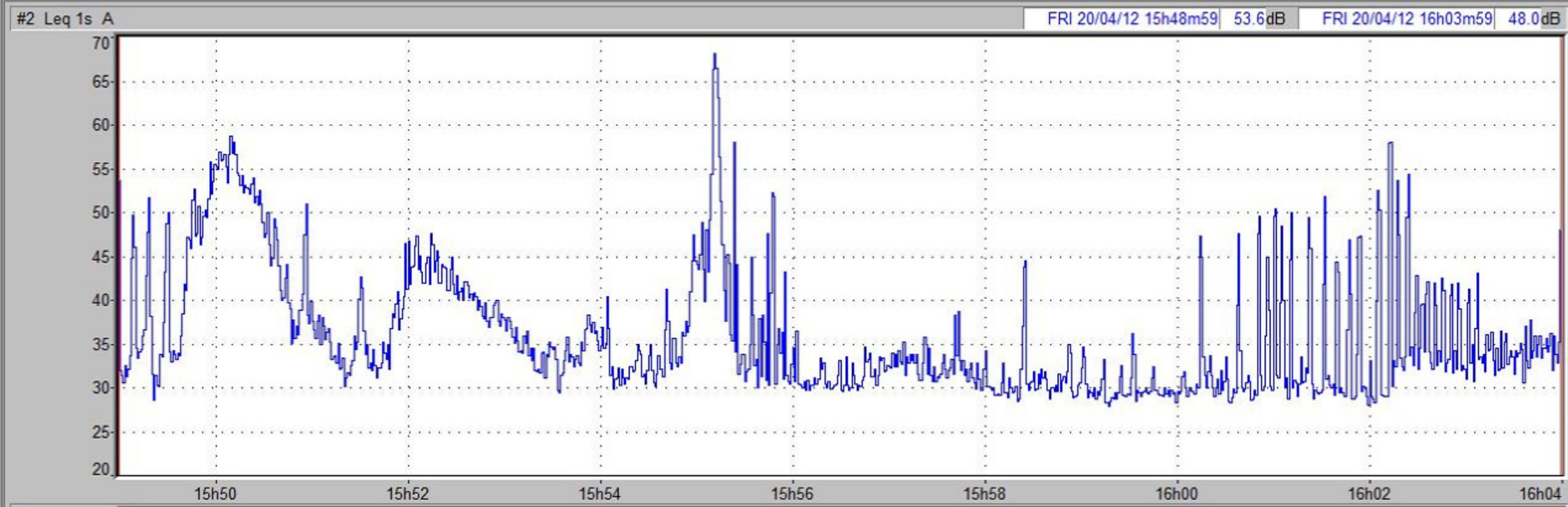
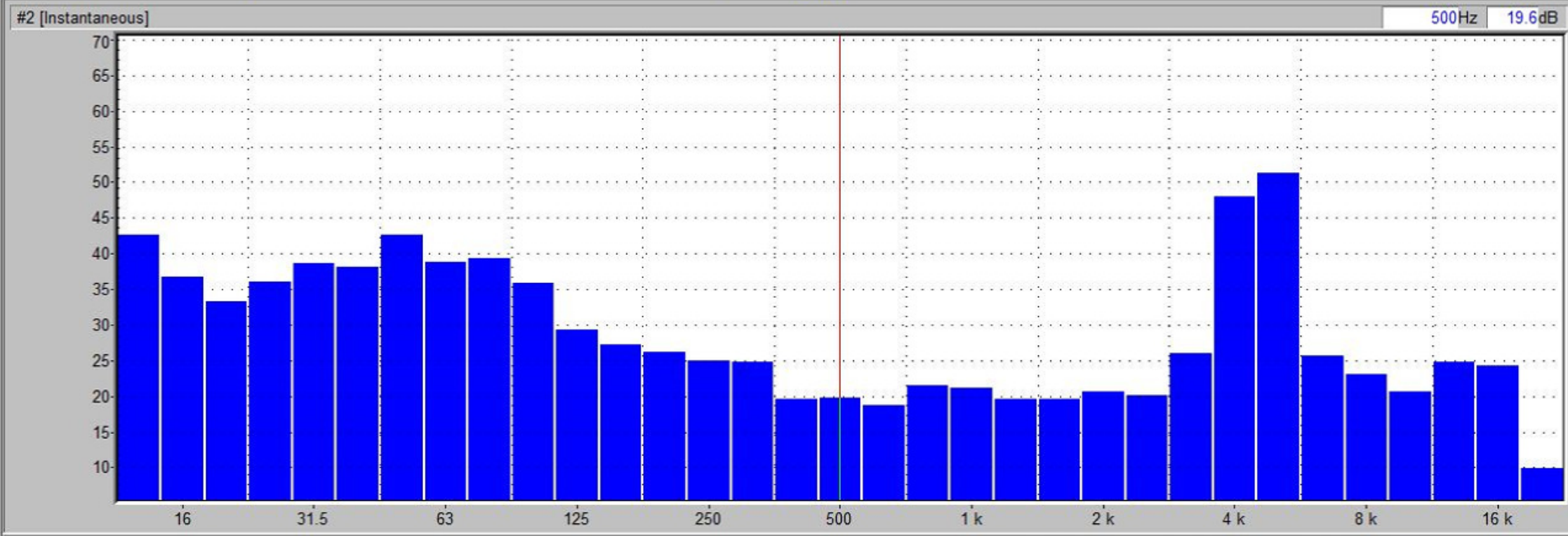
**GRAFICI DELLE
IMMISSIONI SONORE MONITORATE**

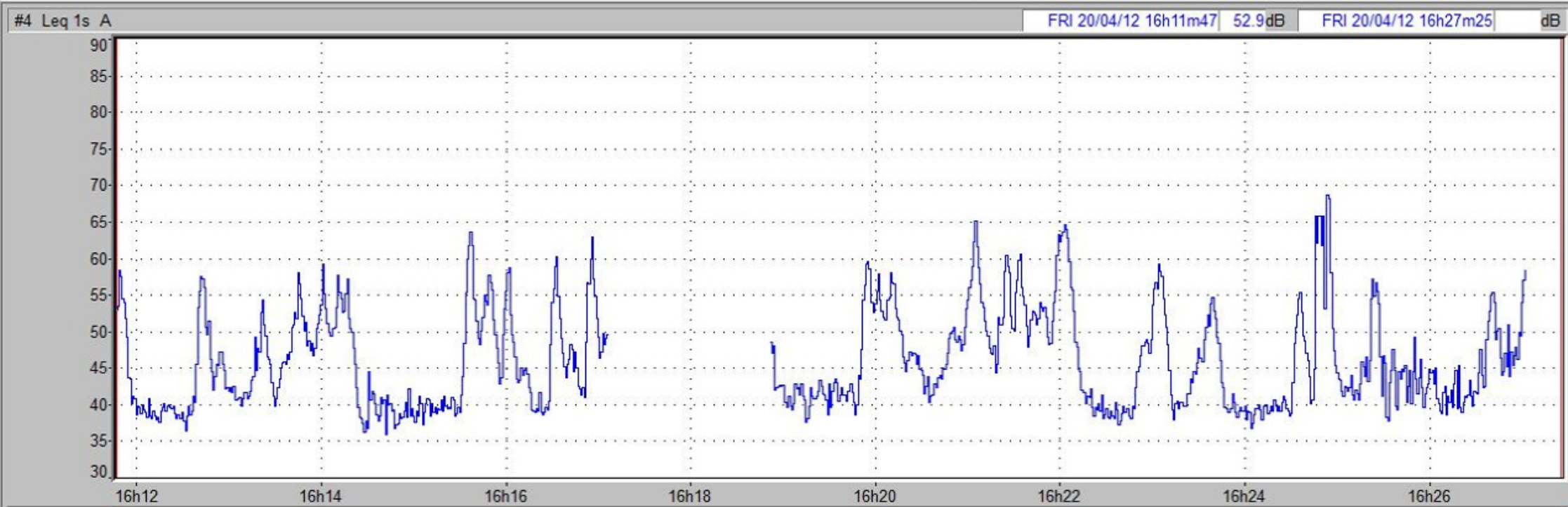
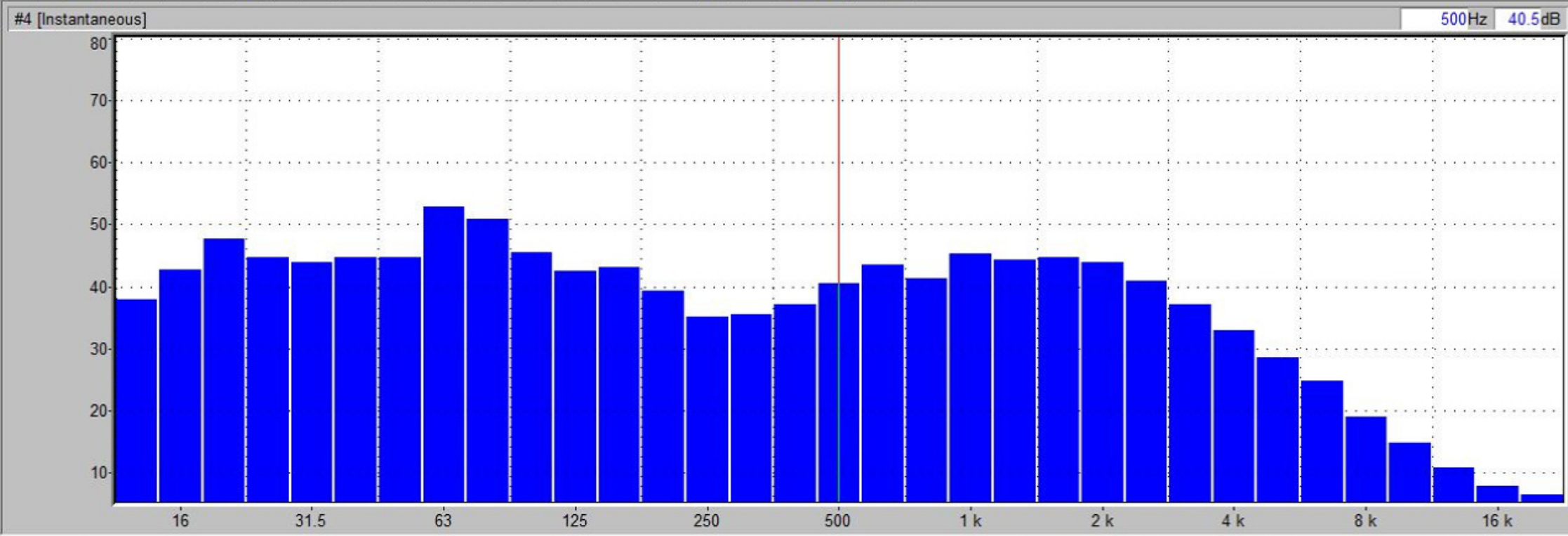


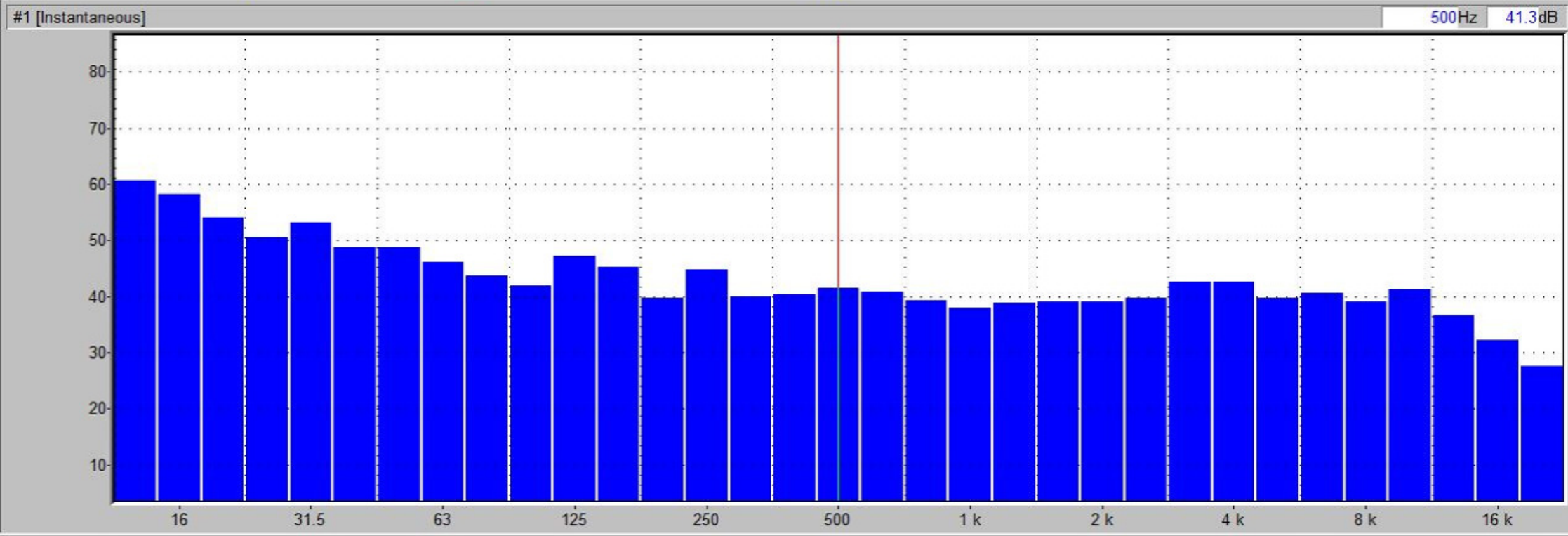




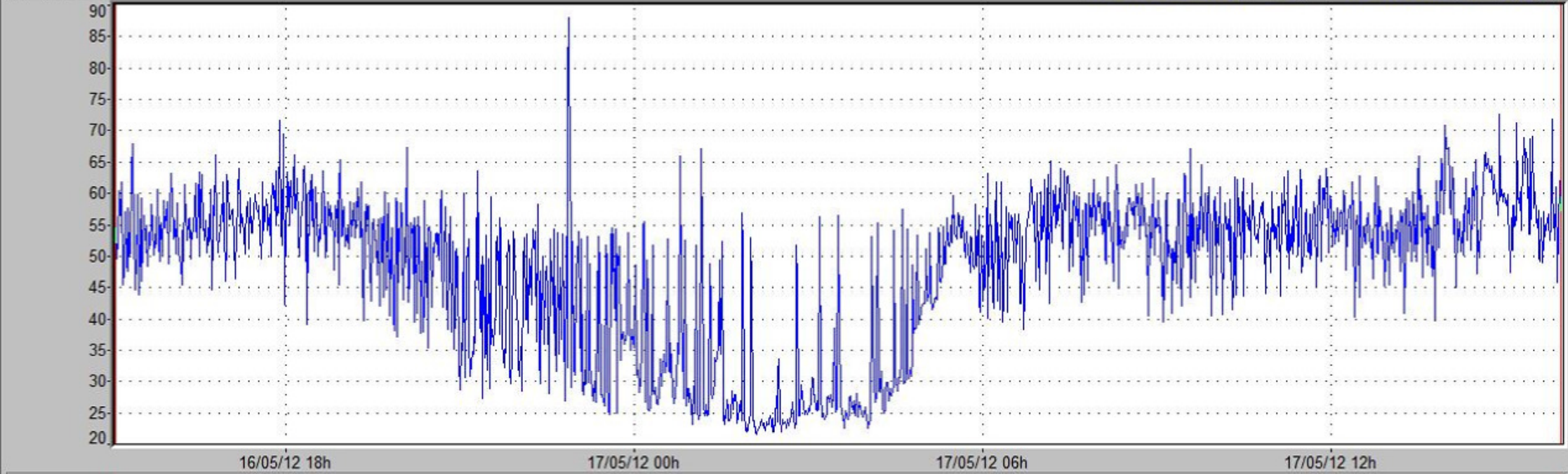








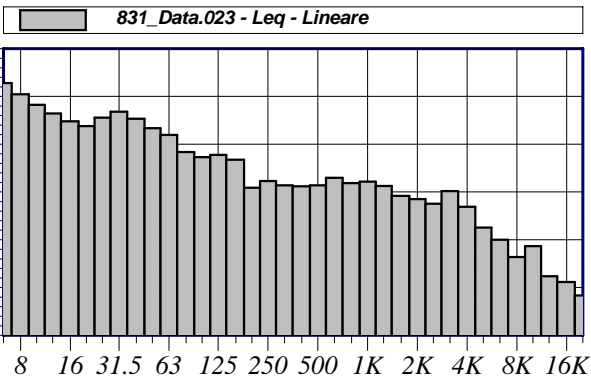
#1 Leq 1m A WED 16/05/12 15h04 52.0dB THU 17/05/12 15h57 57.0dB



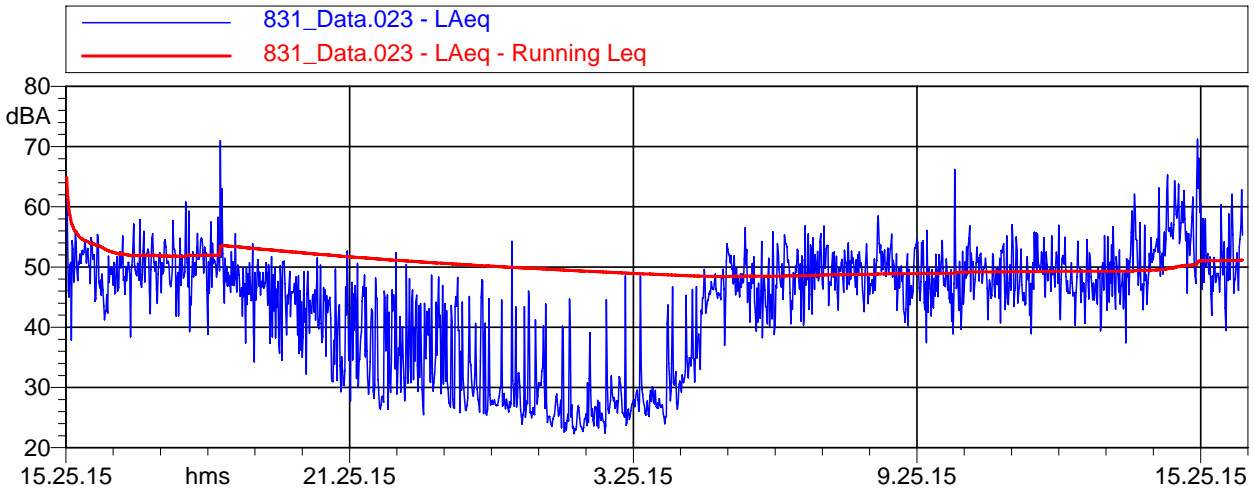
Nome misura: 831_Data.023
Località: BIANZANO, VIA PER RANZANICO
Strumentazione: 831 0001795
Durata misura [s]: 89580.0
Nome operatore: RC
Data, ora misura: 16/05/2012 15.25.15
Over SLM: 0 **Over OBA:** 2

831_Data.023 Leq - Lineare					
dB		dB		dB	
6.3 Hz	62.8 dB	100 Hz	47.3 dB	1600 Hz	39.2 dB
8 Hz	60.5 dB	125 Hz	47.8 dB	2000 Hz	38.5 dB
10 Hz	58.2 dB	160 Hz	46.8 dB	2500 Hz	37.5 dB
12.5 Hz	56.5 dB	200 Hz	40.9 dB	3150 Hz	40.2 dB
16 Hz	54.8 dB	250 Hz	42.3 dB	4000 Hz	36.9 dB
20 Hz	53.8 dB	315 Hz	41.4 dB	5000 Hz	32.5 dB
25 Hz	55.6 dB	400 Hz	41.2 dB	6300 Hz	30.0 dB
31.5 Hz	56.8 dB	500 Hz	41.4 dB	8000 Hz	26.4 dB
40 Hz	55.3 dB	630 Hz	43.0 dB	10000 Hz	28.7 dB
50 Hz	53.4 dB	800 Hz	41.9 dB	12500 Hz	22.4 dB
63 Hz	51.9 dB	1000 Hz	42.2 dB	16000 Hz	21.2 dB
80 Hz	48.4 dB	1250 Hz	41.3 dB	20000 Hz	18.4 dB

LAeq,d = 52.6 dBA
LAeq,n = 42.2 dBA



Annotazioni:



831_Data.023 LAeq				
Nome	Inizio	Durata	Leq	Lmax
Totale	15.26.15	89580 hms	51.2 dBA	71.2 dBA
Non Mascherato	15.26.15	89580 hms	51.2 dBA	71.2 dBA
Mascherato		0 hms	0.0 dBA	0.0 dBA

TAVOLE